



Mackenzie & Moncur started in business around 1850. During the second half of the 19th century they manufactured and constructed hothouses throughout Scotland and in various parts of England. In many instances they provided the heating systems for these hothouses.

Their work included hot water heating for all kinds of horticultural buildings. They also provided high and low pressure heating apparatus for public buildings, churches, schools, mansions, factories and warehouses. In addition they carried out steam and gas heating as well as natural and mechanical ventilation systems.

Their clients included Queen Victoria, the Prince of Wales and the Duke of York (A listing of their Patrons and Projects is given in Parts-5 & 6 of this electronic book).

The firm continued in both the hothouse and heating business for many years, but only joined the Heating & Ventilating Contractors' Association in 1945. The Company was taken over by Balfour Kilpatrick in the early 1970's.

This electronic book is a snapshot of their business in 1900, compiled from their catalogue by Brian Roberts, Chairman CIBSE Heritage Group.

GOLD AND SILVER MEDALS

AT
INTERNATIONAL FORESTRY EXHIBITION, EDINBURGH, 1884.
INTERNATIONAL SCIENCE & ART EXHIBITION, EDINBURGH, 1886.
INTERNATIONAL ELECTRICAL EXHIBITION, EDINBURGH, 1890.
INTERNATIONAL HORTICULTURAL EXHIBITION, LONDON, 1892.
GARDENING AND FORESTRY EXHIBITION, LONDON, 1893.
EARL'S COURT EXHIBITION, LONDON, 1897.



BY SPECIAL APPOINTMENT TO H. R. H. THE PRINCE OF WALES

MACKENZIE & MONCUR

LIMITED

HOTHOUSE BUILDERS

HEATING & VENTILATING ENGINEERS

REGISTERED OFFICE
AND WORKS

BALCARRES STREET, EDINBURGH.

Branch
VICTORIA ROAD,
GLASGOW.

LONDON - 8 CAMDEN ROAD, N.W.

MACKENZIE & MONCUR, LIMITED,



Mess^{rs} Mackenzie and Moncur
You are hereby appointed
Hot-house Builders and Heating Engineers
to His Royal Highness The Prince of Wales.

Given under my hand and seal
at Marlborough House,
this first day of March 1892

J. M. P. Jones
Comptroller.

This Warrant is granted
to Mess^{rs} Donald Mackenzie, William Mackenzie, James Mackenzie, Mess^{rs} Mackenzie and Moncur,
personally, trading under the Firm of
Mess^{rs} Mackenzie and Moncur,
and is to be returned to the Comptroller of the Prince of
Wales's Household in the event of any change taking place
in the Firm from death, retirement, or other cause.



EDINBURGH, GLASGOW, & LONDON.

Mackenzie & Moncur, Limited

HOTHOUSE BUILDERS,
HEATING & VENTILATING ENGINEERS.

Telegrams—"Treibhaus, London."
"Hothouse, Edinburgh."
Telephone No., 74 Morningside, Edinburgh.

LONDON 6 CAMDEN ROAD, N.W.
GLASGOW VICTORIA ROAD
EDINBURGH { REGISTERED OFFICE & WORKS
BALCARRES STREET
Near Morningside Station

BY SPECIAL APPOINTMENT



TO H.R.H. THE PRINCE OF WALES.

EDINBURGH, 1900.

We have pleasure in submitting a copy of our Catalogue. In it a variety of designs are given of Ranges of Hothouses, Winter Gardens, Conservatories, Plant Houses, Pavilions, Summer Houses, etc., erected by us, which we trust may be of service. We do not issue a Price List, as the cost of Horticultural Buildings varies very considerably according to local requirements, and the price is also affected by the fluctuations in cost of materials and the rate of wages; but we shall be glad to quote for any of the designs in the Catalogue, or to furnish Estimates from Drawings sent to us.

When a Range of Hothouses or a Conservatory requiring special treatment to suit the surroundings, is proposed to be erected, our usual course is to visit the site and thereafter prepare special Designs, Specifications, and Estimates.

Following the illustrations in the Catalogue we give a list of our Patrons with their addresses, and we would refer parties to places in their district where our work may be seen and inspected.

We would draw special attention to the greatly increased facilities we now possess in our New Premises for the manufacturing and fitting of Horticultural Buildings of every description in wood or iron; also Verandahs, Pavilions, etc. Our works cover about three acres of ground, and have been specially built to facilitate output; as will be seen from the accompanying plan and views, they

are extensive and complete. Each workshop is fitted with the latest appliances and labour-saving machinery, electrically driven, and specially adapted for our class of work. Our workmen are also specially trained and thoroughly experienced. We are therefore in a position to undertake and execute all orders with the greatest dispatch and economy.

We hold large stocks of the best St. Petersburg redwood, and of teakwood, all of which is thoroughly seasoned before being wrought. Teakwood is now extensively used, especially for houses requiring a high temperature or a moist atmosphere, and we strongly recommend it for all classes of work on account of its great durability.

Having made Heating with Hot Water and Steam a special study, we are prepared to formulate schemes and carry out complete installations, not only in Hothouses, but in Mansions, Public Buildings, Churches, Halls, Schools, and Business Premises.

We shall also be pleased to prepare schemes for the proper Ventilation of Buildings, either by Natural or Mechanical means as the special circumstances may admit of.

In all our work only the very best materials are used, combined with first-class workmanship, and the estimates are calculated on the lowest remunerative charges.

We take this opportunity of thanking the numerous friends and patrons throughout the country who have so largely supported the business during past years.

MACKENZIE & MONCUR, LIMITED.

MACKENZIE & MONCUR, LIMITED,

LIST OF SPECIALITIES

WINTER GARDENS.

CONSERVATORIES.

VINERIES and all other kinds of FRUIT HOUSES.

Forcing Houses

Orchid Houses

Plant Houses.

VERANDAHS

GARDEN PITS AND FRAMES. SASHES, &c.

FRUIT ROOMS, POTTING HOUSES, MUSHROOM HOUSES, &c.

Iron and Slate Staging, Teak Plant Tubs, Orchid Baskets, Garden Chairs, Fountains, Cisterns.

All kinds of HORTICULTURAL WIRE WORK. Blinds for Shading, Vases, Tile Floors, Kerbs, &c.

REPAIRS & PAINTING

Pavilions for Cricket, Golf, Tennis, Bowling, &c.

Swimming Baths, Summer Houses, Wooden Shooting Lodges, Cottages, &c.

BAND STANDS.

HOT-WATER HEATING FOR ALL KINDS OF HORTICULTURAL BUILDINGS.

HOT-WATER APPARATUS, HIGH AND LOW PRESSURE, FOR HEATING ALL KINDS

OF PUBLIC BUILDINGS, CHURCHES, SCHOOLS, MANSION-HOUSES, VILLAS,

WORKS, WAREHOUSES, HARNESS ROOMS, DAIRIES, &c.

STEAM HEATING on the RETURN, GRAVITY, and EXPANSIVE SYSTEMS

for PUBLIC BUILDINGS, WORKS, SWIMMING BATHS, &c.

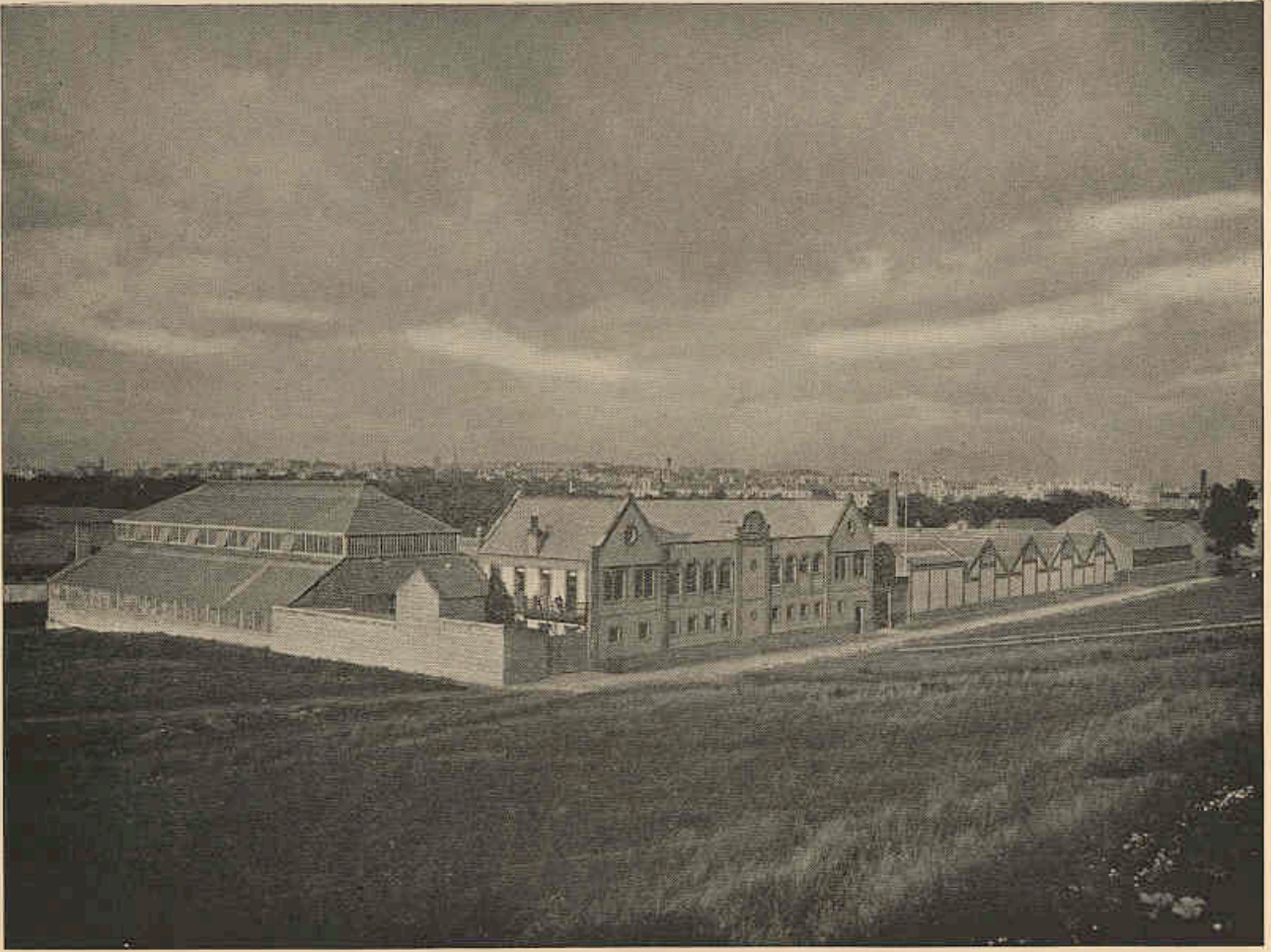
Boilers, Patent Radiators, Coils, Valves, and Fittings for all kinds of Heating Apparatus.

GAS HEATING APPARATUS

Atmospheric and Mechanical VENTILATION for BUILDINGS.

Steam Cooking Apparatus, Stable Fittings, Railings, Gates, &c.

EDINBURGH, GLASGOW, & LONDON.



VIEW OF WORKS AND OFFICES.

MACKENZIE & MONCUR, LIMITED, EDINBURGH, GLASGOW, AND LONDON.



Wood-working Shop.



Engineers' and Smiths' Shop.



Painters' Shop.



Sawmill.

INTERIOR VIEWS OF WORKSHOPS.

MACKENZIE & MONCUR, LIMITED, EDINBURGH, GLASGOW, AND LONDON